

SpaceTech Steel Construction

Your reliable partner in Space Frame steel Structure



Jack Chen

Business Development Director

SpaceTech Steel Constuction Co.,Ltd

RM1013 WanKe Building ,No.15th Building

No.2419 HuNan Road PuDong New Area ShangHai China

Tel:+86-21-68586928

Fax:+86-21-68586929

Mobile:+86-13752621663

Email: jackchen@spacetechsteel.com

For more of our information, please visit www.spacetechsteel.com



Steel Construction Co.,Ltd

Your partner when you want it all in space frame.

Home: About us



Since 1992, Space Frame production Base XuZhou now today is an internationally operating company and a proven specialist with the proven brand SpaceTech Steel for space frame products from China.

The company has formed a set of steel structure, space frame, Parts production; include design, production, installation, service in one integrated modern construction enterprise, over the years the company's steel structure, space frame manufacture, installation, enterprise scale, technological processes and quality control is at the forefront of the same industry.

We provide complete design, engineering and manufacturing services for steel structural projects. With registered capital of 300.8 million RMB, Various types of technical personnel 425 people, one-level National certified architect 78 people, two-level National certified architect 72 people. We have finished nearly 3,000 steel structural projects around the world since the establishment of our company. Our overseas market includes Middle East, Africa, South America and Southeast Asia. Our core projects focus on sports facilities, factouries, hangar, transportation facilities and civil building facilities. Our key products include steel space frame, light steel products, structural steel truss, purline, fence products and prestressed structure products. The annual capacity is 80,000tons

On 2015, The contractor from Holland-VanDerLeun Group , join together with SpaceTech in engineering, production and supply the space frame, steel structure to meet the requirement of European standard.

With qualification of

- ❖ Certificate of the National Research and Development base in heavy and large-span steel structures.
- ❖ Class A Design unit for specialized steel structure engineering
- ❖ First grade qualification for quality inspection of steel structure and steel spatial grid product

Approved by China Construction Metal Structure Association

Factory



Space frame, Pipe Truss, Steel structure Parts

- ❖ Space Frame steel structure Products



- ❖ Steel pipe



- ❖ Node Ball



- ❖ Cone



- ❖ High Tension Bolt



- ❖ Pins



- ❖ Sleeve Nuts



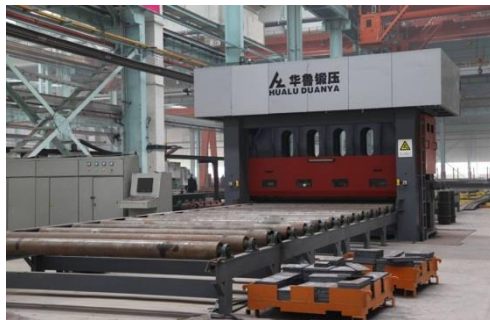
Equipments

Main Equipments space frame steel structure workshop:



Main Equipment:

- ❖ NC flame limited rotation 3-cutting-torch cutting machine
- ❖ NC flame cutting machine & plasma cutting machine
- ❖ seven-roller levelling machine
- ❖ box beam automatic production line
- ❖ edge planning and milling machine
- ❖ gantry movable NC 3D drilling machine
- ❖ movable NC planar drilling machine
- ❖ NC hydraulic shearing machine
- ❖ intersecting line cutting machine



7-Roller Leveling machine :
Thickness 8-32mm
Max Width 3600mm
Processing Length



18-m Planing & Milling Machine
Processing Thickness 6-150mm
Processing width 500-1100mm
18000mm



Gantry Movable NC 3D Drilling Machine
processing width 1000-2000mm



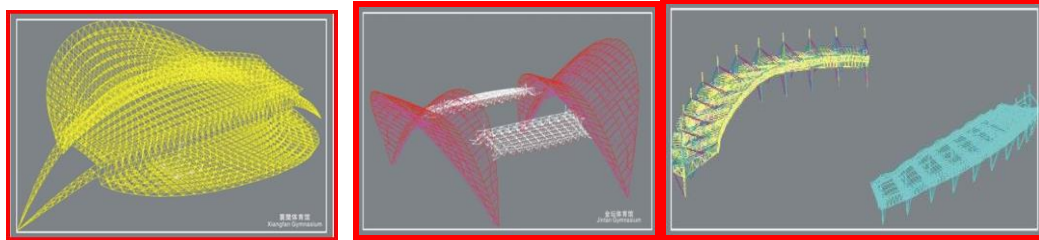
NC Intersecting line Cutting Machine
Machining diameter 60-800mm

Design-Engineering

The company has been in good cooperation and academic exchanges with universities and institutes such as TONGJI University and TianJin University, China Steel Structure Association.

Focus on Customer-Oriented technical solutions

Ensure all your technical problem solved with high efficiency



Software in use:

PKPM, SFCAD, 3D3S, MST, TEKLA STEEL, MIDAS, STAAD/CHINA.

International Code we are applying for:

European Standards

British Standards Institution (BS),

American Institute of Steel Construction (AISC)

International Building Code (IBC)

Chinese National Standard (GB)

Japanese Industrial Standards (JIS)

Korean Standards (KS)

Quality Control System

We make mechanical test, Chemical Component Analysis and None destructive testing for metallic materials, products. None destructive testing for Welding quality. Anti-corrosive coating inspection for steel structure.

- Insist the Principal of Quality First
- Strictly apply the regulation of the fabrication process and the Erection Process
- Strictly apply the regulation of quality control system and the standard
- Strictly quality control the process from material purchasing to Erection



The Third party inspection





Steel Construction Co.,Ltd

Reference Projects build from Nuts and bolts

The principal we
follow:
Optimal Design

Precise Manufacturing

Improved
Construction
& Endless pursuit for
excellence

The Projects Over the World



BaiYin Sports Center

16134m² sports Center , include the space frame structure and pipe Truss structure , built in 2010



YingKou Olympic Sports Center .Space frame and pipe truss structure .7100m² built in 2012.

Shipyards Vietnam



16636m² space frame and with 1650 ton steel structure include the roof system.



You Choose Us , You play safe

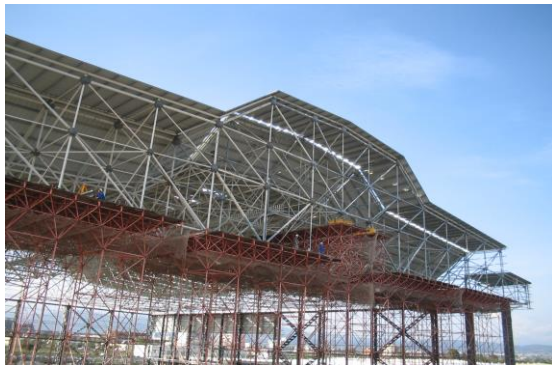
Experts in Space Frame steel structure



HaiMa Equipments Plant 16800m² space frame and 1500ton steel structure with roof panel finish in 2012

Maintenance Airport Hanger

Maintenance Hanger of Ethiopia Airline, Welding space frame , three layer space frame in the middle part , dimension 81.5mx96m (the span is 81.5m) 33.5m high

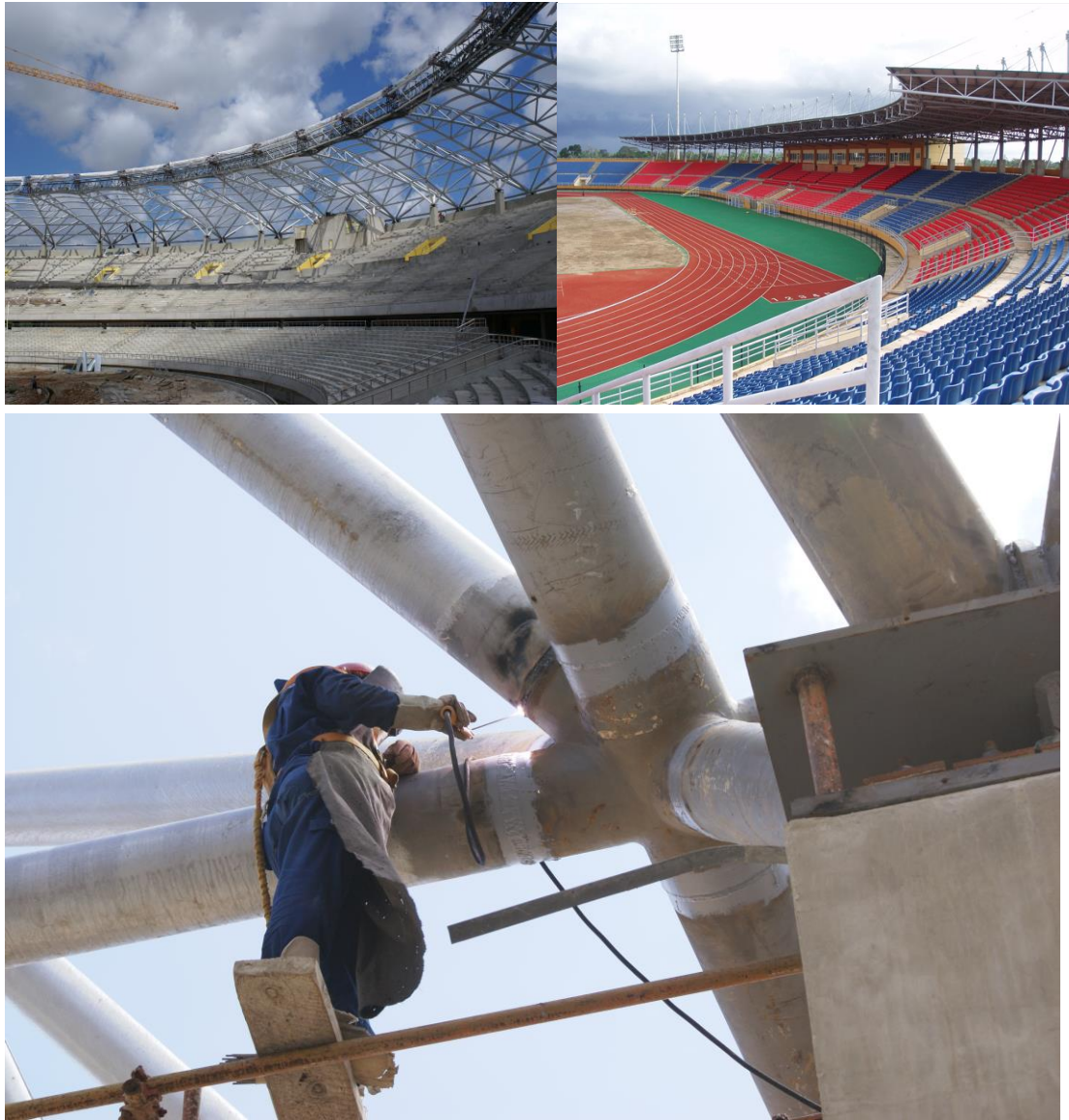


Samoa national swimming pool project



Project Tanzania

TanZania Stadium



Project Indonesia

Generai Energi Bali Indonesia 3X142MW Power Plant



Jeneponto 2x125 MW coal-fired power plant coal shed

located at Butaguntung area of Desa Punagaya, Celebes Island of Indonesia 85x360m space frame ,Successfully finished on March 2015



Project Malaysia

CRRE Factory Batu Gajah Perak Malaysia

It's Flat Type space frame structure with span of 60 meters and 240 meters Long.



Project Philippine

PCPC 2x135MW Power Plant coal shed Project Philippine

Owner: Palm Concepcion Power Corp, Project located in Concepcion Iloilo Panny Philippine



Misamis 3×135MW Power Plant Coal shed Project

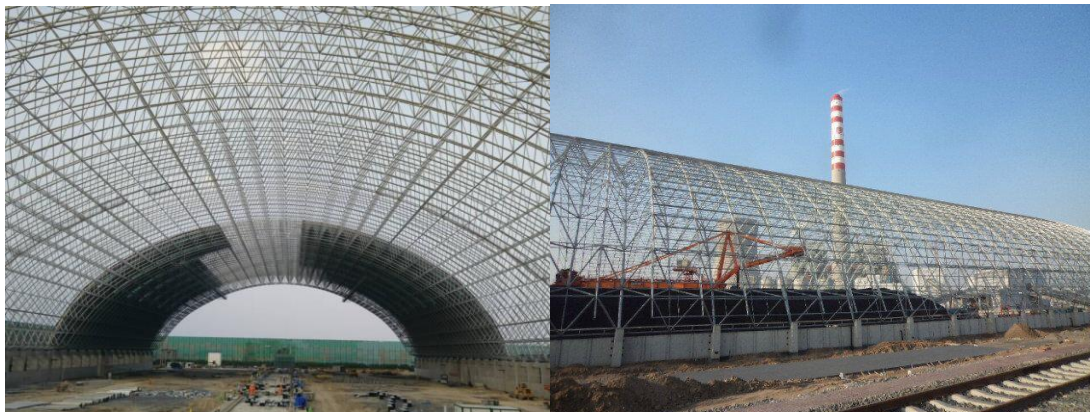
Owner:FDC Misamis Power Corporation, Project located in Misamis Oriental Province Mindanao
Philippine



Project India

Mundra Thermal Power Plant, Mundra, Gujarat, India

The project is located in Kutch district of Gujarat in India , the construction is quadrangular pyramid cylindrical shell grid structure The span is 75m, length 185 m, roof panel use Single-layer color plate, and thickness 0.7mm type 760





Steel Construction Co.,Ltd

Space Frame Projects Reference.



Jack Chen

Business Development Director

SpaceTech Steel Constuction Co.,Ltd

No.15th Building No.183 Yinshan Road Pudong Area ShangHai China

Tel:+86-21-68407705

Fax:+86-21-68407457

Mobile:+86-13752621663

Email: jackchen@spacetechsteel.com

For more of our information, please visit www.spacetechsteel.com

Catalogue

Spheric shell grid structure.....	2
1. Tian yuan chemical spheric shell grid structure.....	19
2. Sinopec Zhenhai Refining and Chemical Company Project	20
3. Guangdong Shaoguan Sanjiang cement limestone circular project	5
4. The four phase of the project the baiyanghe Power Plant steel structure project	22
5. Yun tian hua Shui fu coal take the place of gas project	23
6. Guangzhou Whampoa power plant dry coal shed project	24
7. Puguang Sinopec Zhongyuan Oilfield Company project.....	25
8. Coda Shenyang gas clean coal gasification project.....	26
9. Sinopec Wuhan ethylene circular coal yard project	27
10. Yangzi petrochemical logistics company ϕ 100 meters circular coal yard project.....	28
11. Datang International dongsheng No. two east 4 ϕ 100 circular coal yard project.....	29
12. CITIC Jiangyin port 2 ϕ 120 meters circular coal yard project	30
13. Shaanxi Yulin Petroleum 2 ϕ 120 meters circular coal yard project	31
14. Inner Mongolia Yize mining area 110 meters circular coal yard project.....	31
15. Wuhai Dongyuan science and technology ϕ 90 meters circular coal yard project.....	16
18. Yanshan petrochemical, coal transportation and storage system with 80 circular coal yard project	
Large-span arch space frame project of dry coal shed	32
2. Oyu mine in Mongolia coal arch space frame project	33
3. Huarun power (Hezhou) dry coal shed space frame	18
4. Sichuan white 600MW circulating fluidized bed unit project.....	35
5. Sichuan Province Yibin fuxi dry coal space frame	36
6. The two phase project of Chongqing Shuang Huai power plant 2 * 660MW dry coal space frame)	37
7. Hainan Jinhai Pulp Paper Co., arch coal yard space frame.....	38
8. The original fuel two period of alumina expansion project	39
9. Fangchenggang electric 2X660 MW ultra supercritical dry coal space frame two phase	
10. Huarun power Cangnan power plant 2*1000 dry coal space frame	
11. Houma 2*300mw coal yard project	
The other space frame project	
1. Yueyang Sinopec Shell Coal Gasification Company dry coal shed space frame	28
2. Sinopec Gaoqiao Petrochemical Company space frame project	29
3. Guangdong Pinghai power plant 2 * 660MW dry coal shed project.....	30
4. Vietnam Haiphong power plant space frame project	31
5. India Mundra Power Plant space frame project.....	32

1. Tian yuan chemical spheric shell grid structure

The project is located in Jinshan chemical Park, Shanghai, the construction is quadrangular pyramid spheric shell grid structure, diameter is 81.5m, developed area 12000m², roof panel use Fluorocarbon Single-layer color plate, type 750, thickness 0.6mm.



2. Sinopec Zhenhai Refining and Chemical Company Project

The project is located in, Jiangsu Province Ningbo city, the construction is quadrangular pyramid spheric shell grid structure, diameter is 85m, developed area 21000m², roof panel use Single-layer color plate, type 820B, thickness 0.6mm.



3. Guangdong Shaoguan Sanjiang cement limestone circular project

The project is located in Guangdong Province Shaoguan city, the construction is quadrangular pyramid double-layer spheric shell grid structure, diameter is 104m, developed area 15200 m², roof panel use Single-layer color plate, type 820, thickness 0.6mm.



***4. The four phase of the project the baiyanghe Power Plant
(2*300MW) steel structure project***

The project is located in Guangdong Province zibo city, The project is a grid dome and construction is quadrangular pyramid double-layer spheric shell grid structure, diameter is 110m, developed area 16500 m², roof panel use Single-layer color plate, type 820, thickness 0.6mm.



5. Yun tian hua Shui fu coal take the place of gas project

The project is located in Yunnan Province Zhao tong city, The project are two grid dome and construction is quadrangular pyramid double-layer spheric shell grid structure, diameter is 83 m, developed area 20500 m², roof panel use Single-layer color plate, type v125, thickness 0.6mm.



6. Guangzhou Whampoa power plant dry coal shed project

The project is located in Guangzhou city, The project are two grid dome and construction is quadrangular pyramid double-layer spheric shell grid structure, diameter is 125 m developed area 42000 m² ,roof panel use Single-layer color plate, type820,thickness 0.6mm.



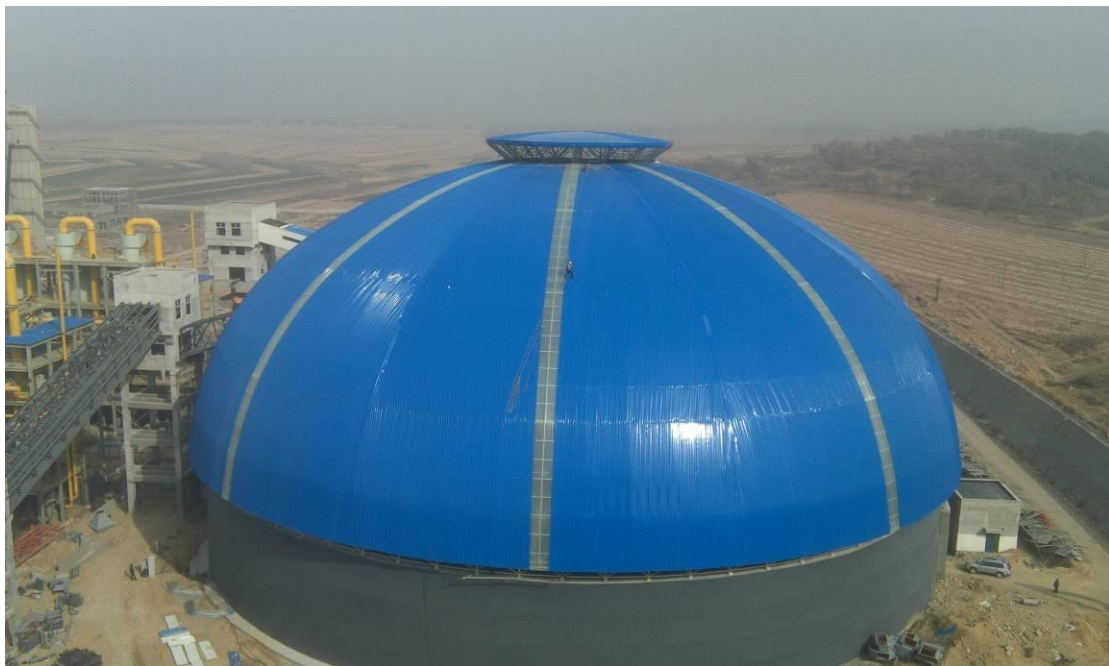
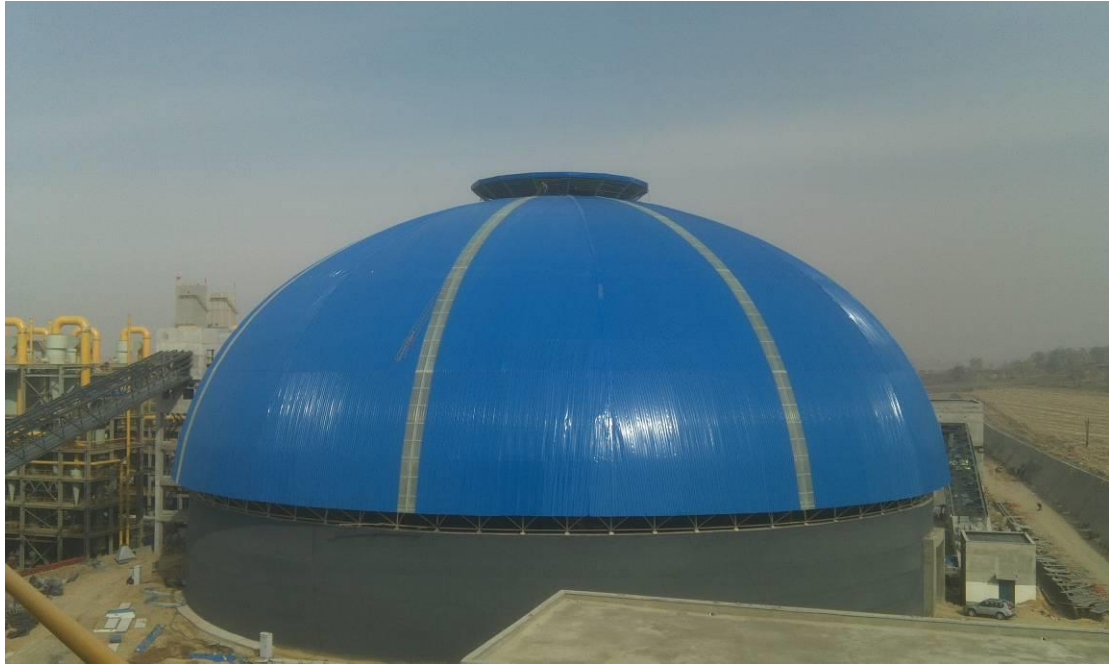
7. Puguang Sinopec Zhongyuan Oilfield Company project

The project is located in dazhou city, The project is a grid dome and construction is quadrangular pyramid double-layer spheric shell grid structure, diameter is 85 m developed area 15000 m², roof panel use double-layer color plate, type 820, thickness 0.6mm.



8. Coda Shenyang gas clean coal gasification project

The project is located in Shenyang city, The project is quadrangular pyramid and double-layer spheric shell grid structure, diameter is 85 m developed area 9600 m², roof panel use single-layer color plate, type 820, thickness 0.5mm



9. Sinopec Wuhan ethylene circular coal yard project

The project is located in Wuhan city, The project is a grid dome and quadrangular pyramid double-layer spheric shell grid structure, diameter is 85 m developed area 18000 m², roof panel use single-layer color plate, type 820, thickness 0.6mm

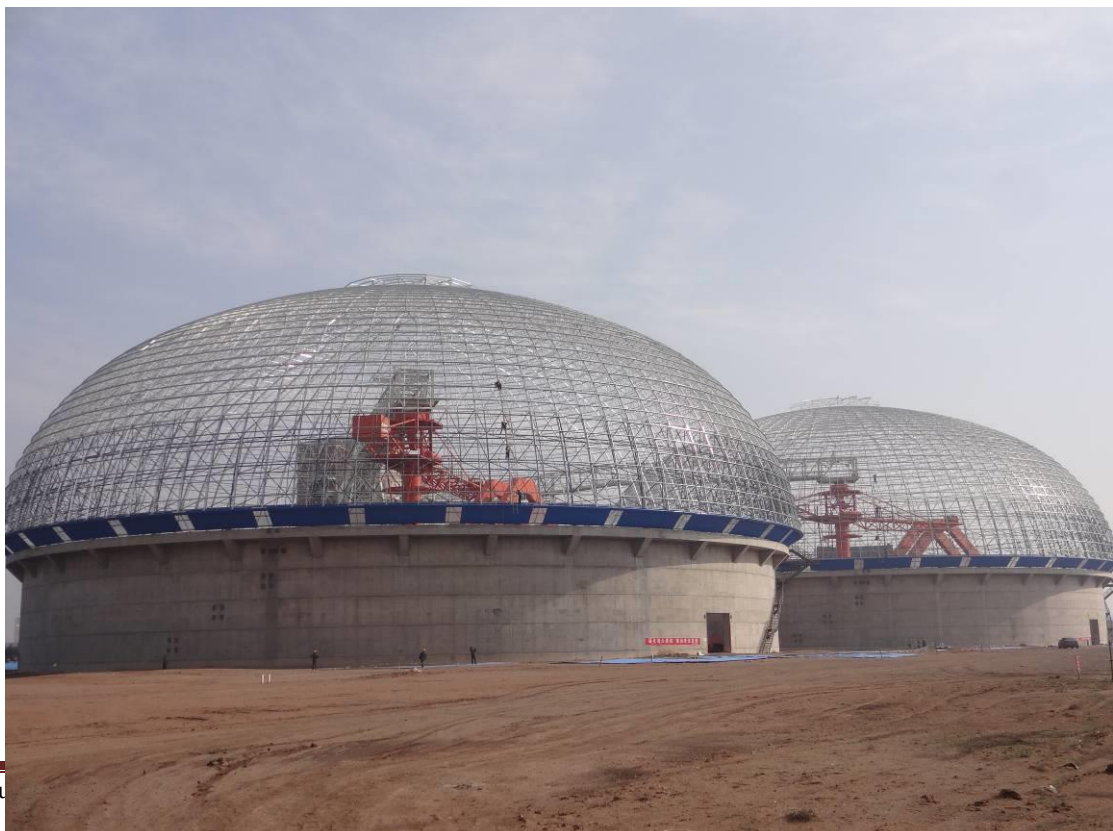
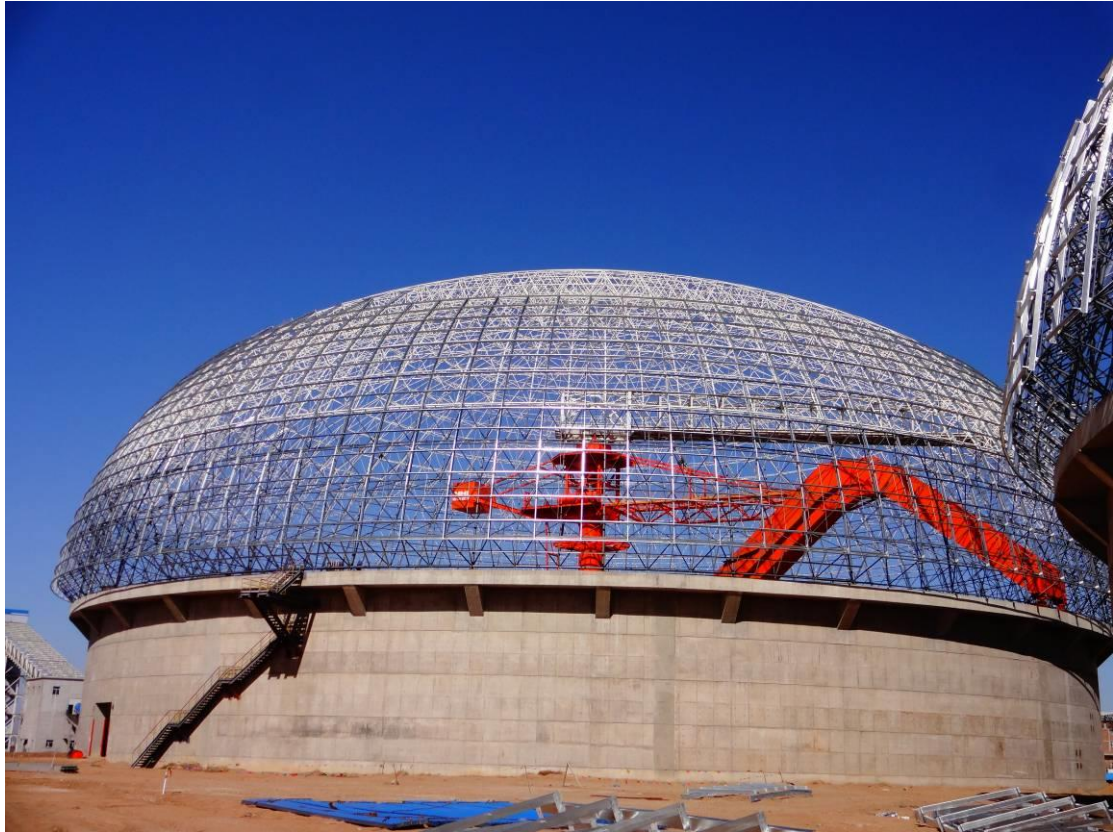


10. Yangzi petrochemical logistics company ϕ 100 meters circular coal yard project

The project is located in Nanjing city, The project is a ϕ 100 grid dome and quadrangular pyramid double-layer spheric shell grid structure, diameter is 105 m developed area 16000 m², roof panel use single-layer color plate, type 820, thickness 0.6mm



***11. Datang International dongsheng No. two east 4 ϕ 100 circular
coal yard project***



12. CITIC Jiangyin port 2 ϕ 120 meters circular coal yard project

***13. Shaanxi Yulin Petroleum 2 ϕ 120 meters circular coal yard
project***



Large-span arch space frame project of dry coal shed project

1. Tong ling power plant phase six space frame

The project is located in, Anhui Province tong ling city, the construction is quadrangular pyramid cylindrical shell grid structure and bottom chord support. Span is 110m, length 100m, floor area 11000m², roof panel use Single-layer color plate, type v125, thickness 0.6mm.

Finish date 2010 year

Design Institute: Shenzhen power planning & design Institute

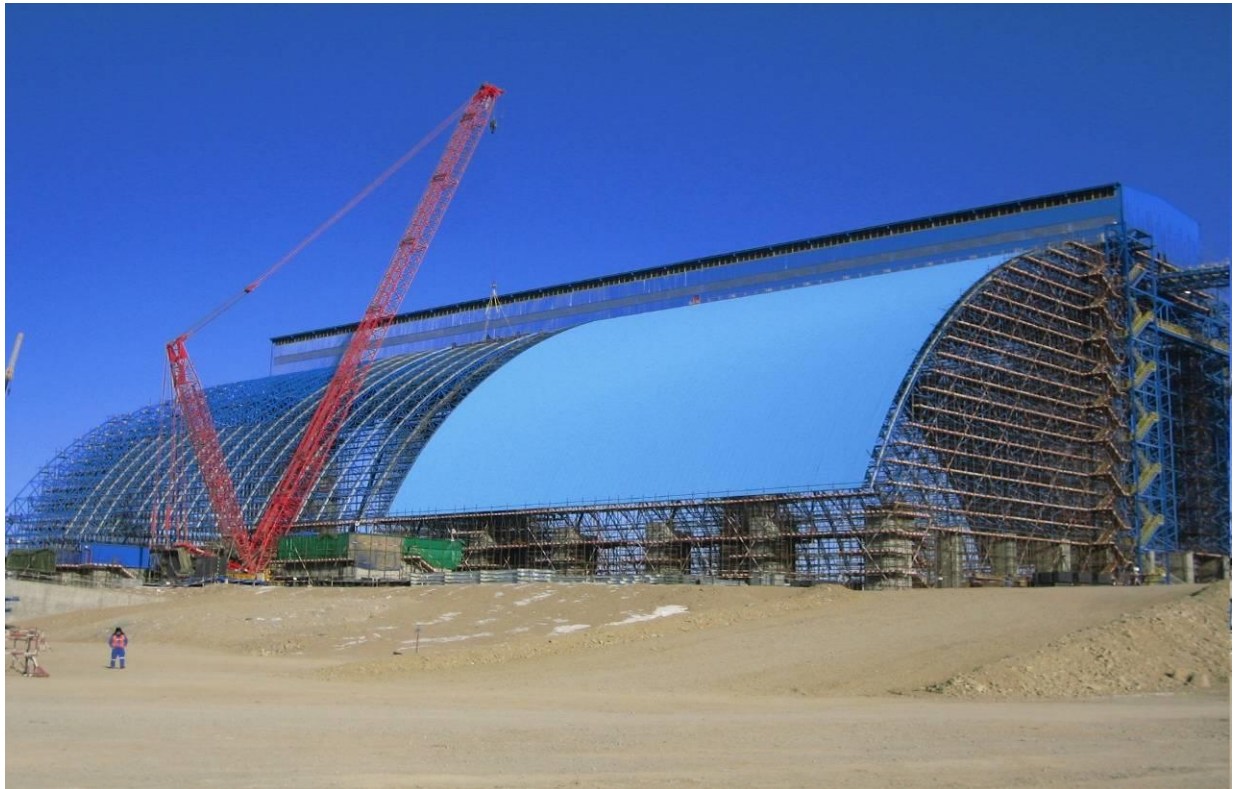


2. Oyu mine in Mongolia coal arch space frame project

The project is located in Mongolia, the construction is quadrangular pyramid cylindrical shell grid structure and bottom chord support. Span is 120m, length 156m, developed area 24366m², roof panel use Single-layer color plate, type v125, thickness 0.7mm.

Finish date 2011 year

Management Company: The United States Fluor Corporation

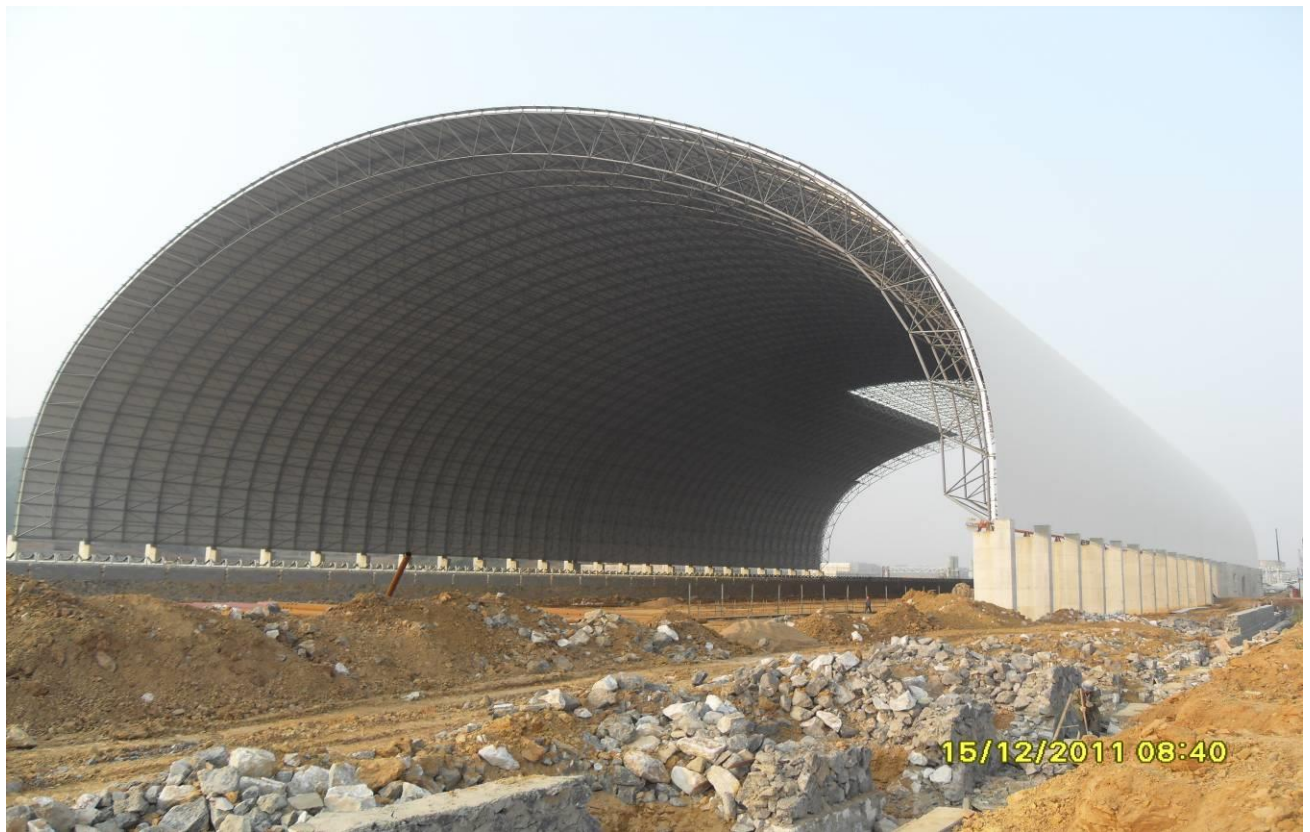


3. Huarun power (Hezhou) dry coal shed space frame

The project is located in, Guangxi Province He Zhou city, the construction is quadrangular pyramid cylindrical shell grid structure and bottom chord support. Span is 100m, length 200m, developed area 30000m², roof panel use Single-layer color plate, type v125, thickness 0.6mm PCDF coating.

Finish date 2012 year

Design Institute: Zhong Nan power & design Institute



4. Sichuan white 600MW circulating fluidized bed unit project

The project is located in, Sichuan Province Nei Jiang city, the construction is quadrangular pyramid cylindrical shell grid structure and bottom chord support. Span is 93m, length 120m, floor area 11160m², roof panel use Taiwan Yehui brand plate, and thickness 0.6mm PCDF coating.

Finish date 2012year

Design Institute: Xi Nan power & design Institute

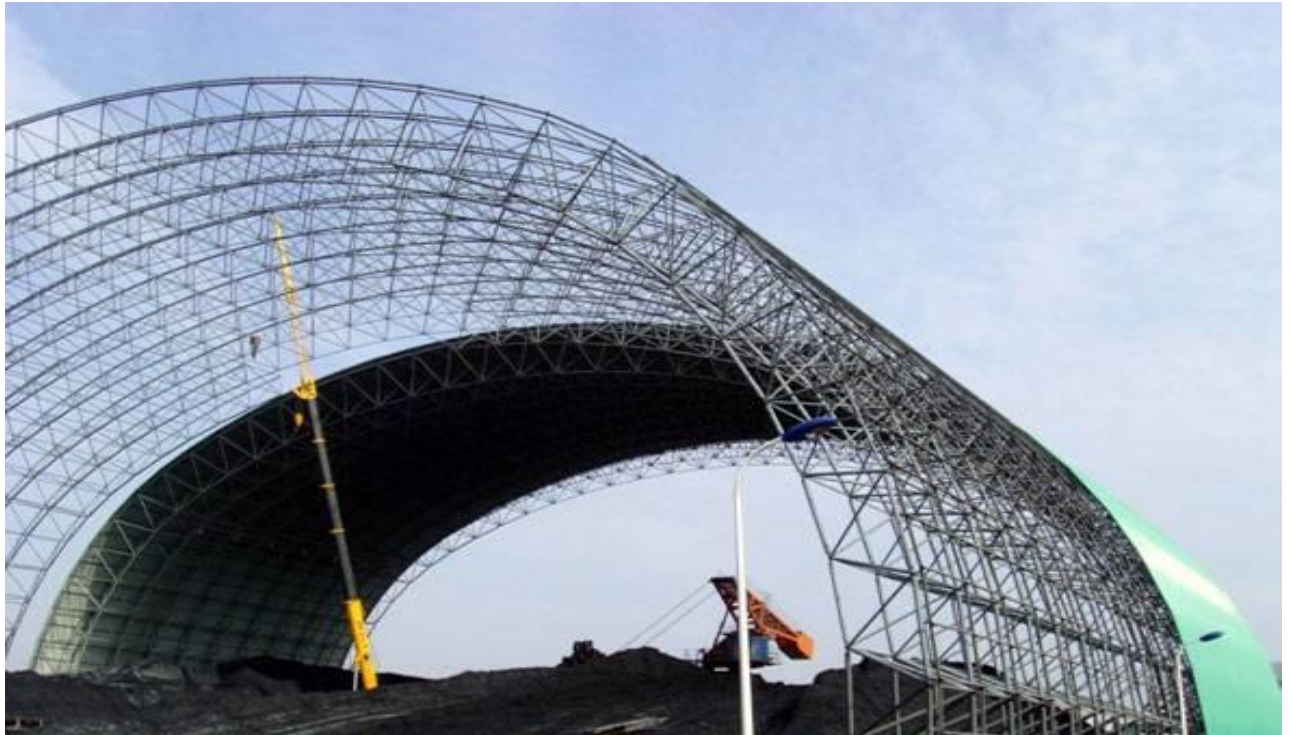


5. Sichuan Province Yibin fuxi dry coal shed space frame

The project is located in, Sichuan Province Yi bin city, the construction is quadrangular pyramid cylindrical shell grid structure and bottom chord support. Span is 96m, length 120m, floor area 11520m², roof panel use Single-layer color plate, and thickness 0.6mm type v125

Finish date 2011year

Design Institute: Xi Nan power & design Institute



6. The two phase project of Chongqing Shuang Huai power plant 2*** 660MW dry coal shed space frame**

The project is located in Chongqing city, the construction is quadrangular pyramid cylindrical shell grid structure and bottom chord support. Span is 120m, length 80m, floor area 14000m², roof panel use Single-layer color plate, and thickness 0.6mm type 820

Finish date 2012year

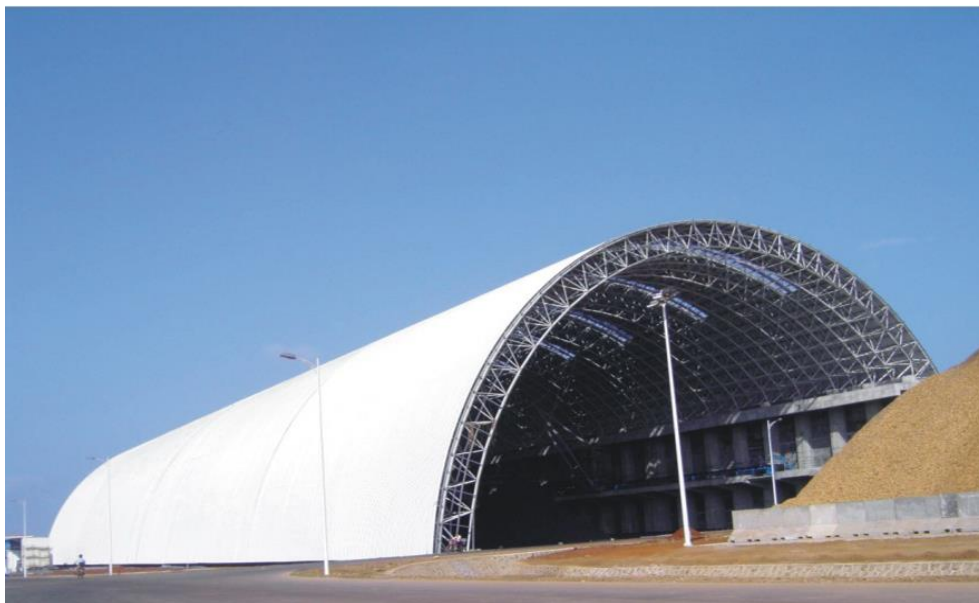
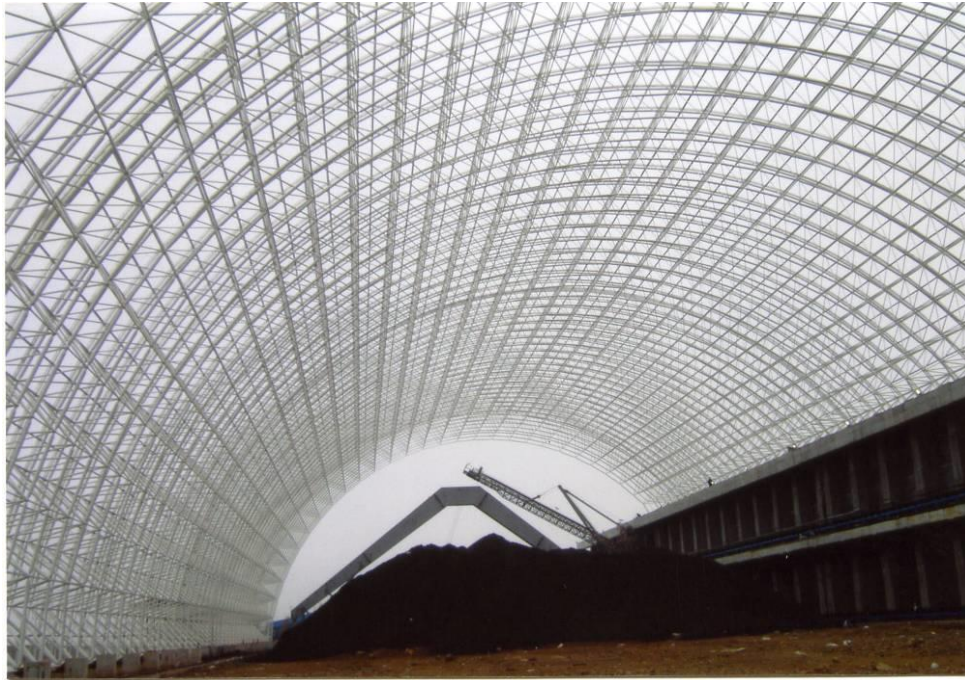
Design Institute: Xi Nan power & design Institute



7. Hainan Jinhai Pulp Paper Co., arch coal yard space frame

The project is located in hainan city, the construction is quadrangular pyramid cylindrical shell grid structure and bottom chord support. Span is 85m, floor area 28000m², roof panel use Single-layer color plate, and thickness 0.6mm type 820B

Finish date 2012year



8. The original fuel two period of alumina expansion project

The project is located in Shanxi Province, the construction is quadrangular pyramid cylindrical shell grid structure and bottom chord support. The space frame have three Span and each span is 60m, floor area 28000m², roof panel use Single-layer color plate, and thickness 0.6mm type 820

